

PATRIOTIC SYMBOLS AND GROUP DECISION MAKING

Performance Standard (14C/14F).A

Identify patriotic symbols and create a picture representing one symbol. The class will vote to select a class symbol. A graph will be made showing the majority rule of the class accordingly:

- *Knowledge*: identify patriotic symbols of the United States and recognize majority rule;
- *Reasoning*: compare symbols to select class symbol using majority rule vote; and
- *Communication*: create a picture of a United States symbol that is well-detailed and participate in the majority rule vote; express all ideas in a way that provides evidence of knowledge and reasoning processes.

Procedures

1. *In order to understand election processes and responsibilities of citizens (14C), and understand the development of United States political ideas and traditions (14F)*, students should experience sufficient learning opportunities to develop the following:
 - Explain why majority rule is used in group decision-making (e.g., voting for food at a class party).
 - Identify a patriotic symbol of the United States (e.g., flag, bald eagle).
2. Have students review and discuss the assessment task and how the rubric will be used to evaluate their work.
3. The class lists ongoing symbols in the world (e.g., no smoking, railroad tracks, crossings etc.) and discusses what they stand for.
4. Set up daily voting situations (4-5 choices) and then class votes for favorite (e.g., story, cartoon, gum, ice-cream, TV Shows etc.). Record votes on a graph. Students may also color on a desk graph each day that matches the class voting. This demonstrates majority rule.
5. Introduce pictures of some of our country's symbols (e.g. Capitol, Liberty Bell, flag, bald eagle, Statue of Liberty) List them on chart paper.
6. Discuss the meaning of each symbol.
7. Have students draw and color a patriotic symbol of the United States.
8. Have students label their symbol and display them.
9. Have students vote on the displayed symbols. Majority rule applies to the winning symbol.
10. Evaluate each student's work using the Social Science Rubric as follows and add the scores to determine the performance level:
 - *Knowledge*: one patriotic symbol was drawn and labeled correctly by the student, and one patriotic symbol was selected by majority rule of the class;
 - *Reasoning*: the class compared the drawings to select one by majority rule; and
 - *Communication*: picture of the symbol was well-detailed and labeled correctly; the graph of the class vote reflected majority rule.

Examples of Student Work follow

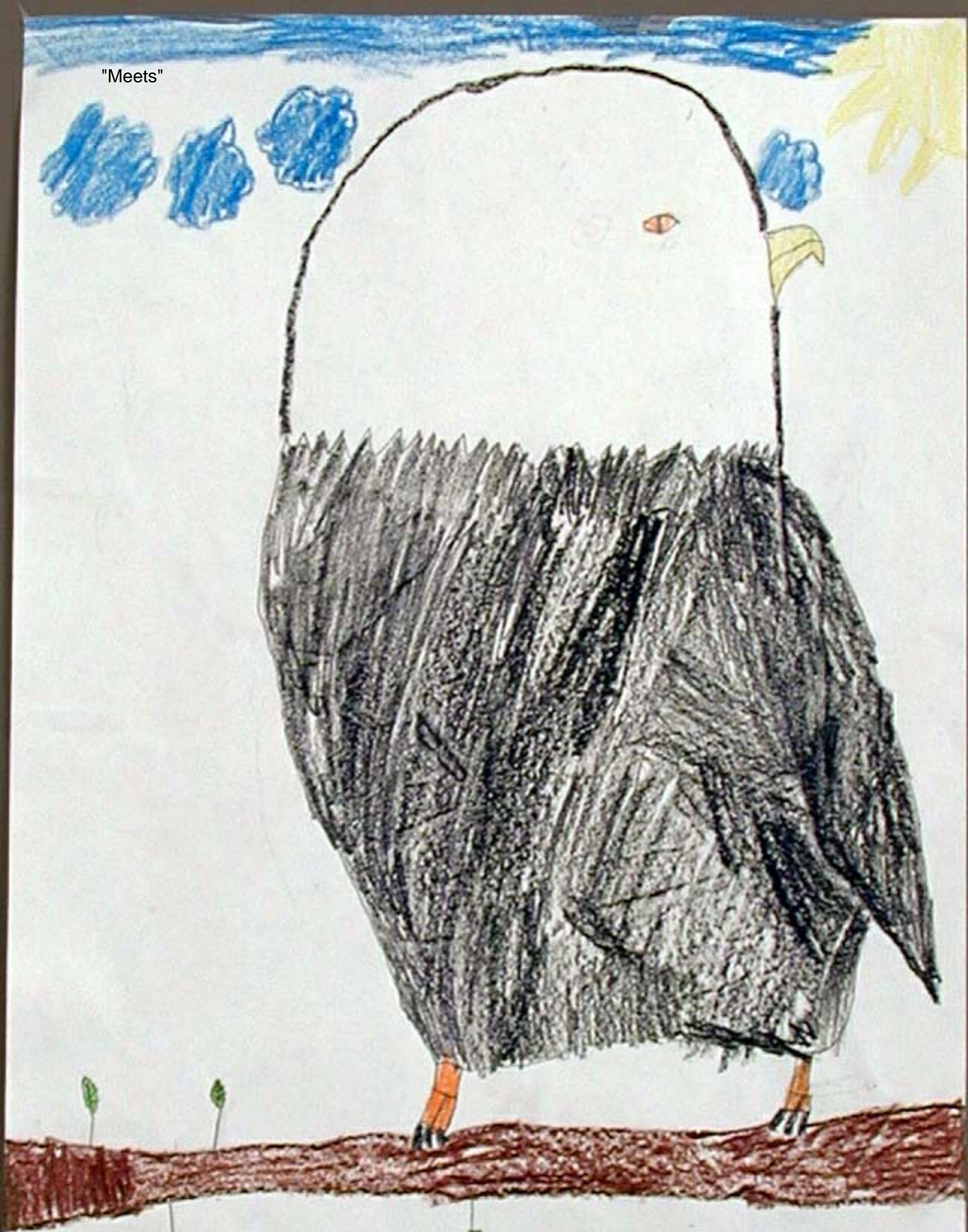
Time Requirements

- One week for majority rule graphs and symbol instruction.
- Two periods for symbol drawing and class voting and graphing

Resources

- Pictures of our country's symbols
 - www.stategov/wwwaboutstate
 - www.gettysburg.com
- Crayons, Color pencils and pencils
- 11x17 drawing paper
- Chart paper for recording symbols and graphing
- Social Science Rubric

"Meets"



Bald Eagle

"Exceeds"



Statue of Liberty

Symbols for the U.S.A.

- American Flag
- Statue of Liberty
- Bald Eagle
- White House
- Soldiers
- Lincoln Memorial

<u>Flag</u>	X X X X X X X X
<u>Statue of Liberty</u>	X X X
<u>Bald Eagle</u>	X X
<u>White House</u>	X
<u>Soldiers</u>	X X X X X
<u>Lincoln Memorial</u>	—
<u>President Bush</u>	X X

VOTING : Majority rule = The American Flag is our class symbol.