

WHERE AM I?

Performance Standard 4A.G

The student will listen to a set of directions read by the teacher and will mark the path on a map to determine his/her destination accordingly:

- *Identifying points on a map:* identify the points on the map.

Procedures

1. *In order to listen effectively in a variety of situations (4A)*, students should experience sufficient learning opportunities to develop the following:
 - Focus attention on speaker as sender of the message.
 - Decide factors that will impact the message (e.g., dialect, language styles, setting, word choice).
 - Determine meaning from speaker's words, voice, and body.
 - Synthesize, analyze, and evaluate information.
 - Paraphrase and summarize, in both oral and written form, information in formal/informal presentations.
 - Modify, control, block out both internal and external distractions.
2. Have students review and discuss the assessment task and how the rubric will be used to evaluate their work.
3. Create sets of directions for the students to practice.
4. The student will be familiar with active listening techniques. (e.g., assume requested position, attend to speaker, focus attention on what is being said).
5. Read aloud a set of directions to travel from a starting point to a destination.
6. The student will listen to the directions and complete a map that illustrates the route to be followed to reach the destination.
7. Evaluate the map for accuracy against the master copy of directions.
8. Evaluate each map against the master copy, deducting each missing component of the map.
9. Evaluate each student's performance using the rubric. Add each student's scores to determine the performance level.

Examples of Student Work follow

Time Requirements

- 10 – 15 minutes

Resources

- Writing materials
- Copies of the map
- Where Am I Rubric

WHERE AM I?

NAME _____ DATE _____

- Exceeds 15 or more items correctly placed
- Meets 12 - 14 items correctly placed
- Approaches 8 - 11 items correctly placed
- Begins 5 - 7 items correctly placed

| | Identification Points on Map |
|--------------|--|
| 4 | • 15 or more points of the map are consistently identified |
| 3 | • 12 to 14 points of the map are usually identified |
| 2 | • 8 to 11 of the points of the map are occasionally identified |
| 1 | • 5 to 7 of the points of the map are identified |
| Score | |

Check the number of points
placed correctly on the
corresponding map.

1. _____ 12. _____
2. _____ 13. _____
3. _____ 14. _____
4. _____ 15. _____
5. _____ 16. _____
6. _____ 17. _____
7. _____ 18. _____
8. _____ 19. _____
9. _____ 20. _____
10. _____ 21. _____
11. _____ 22. _____

Score _____

Directions

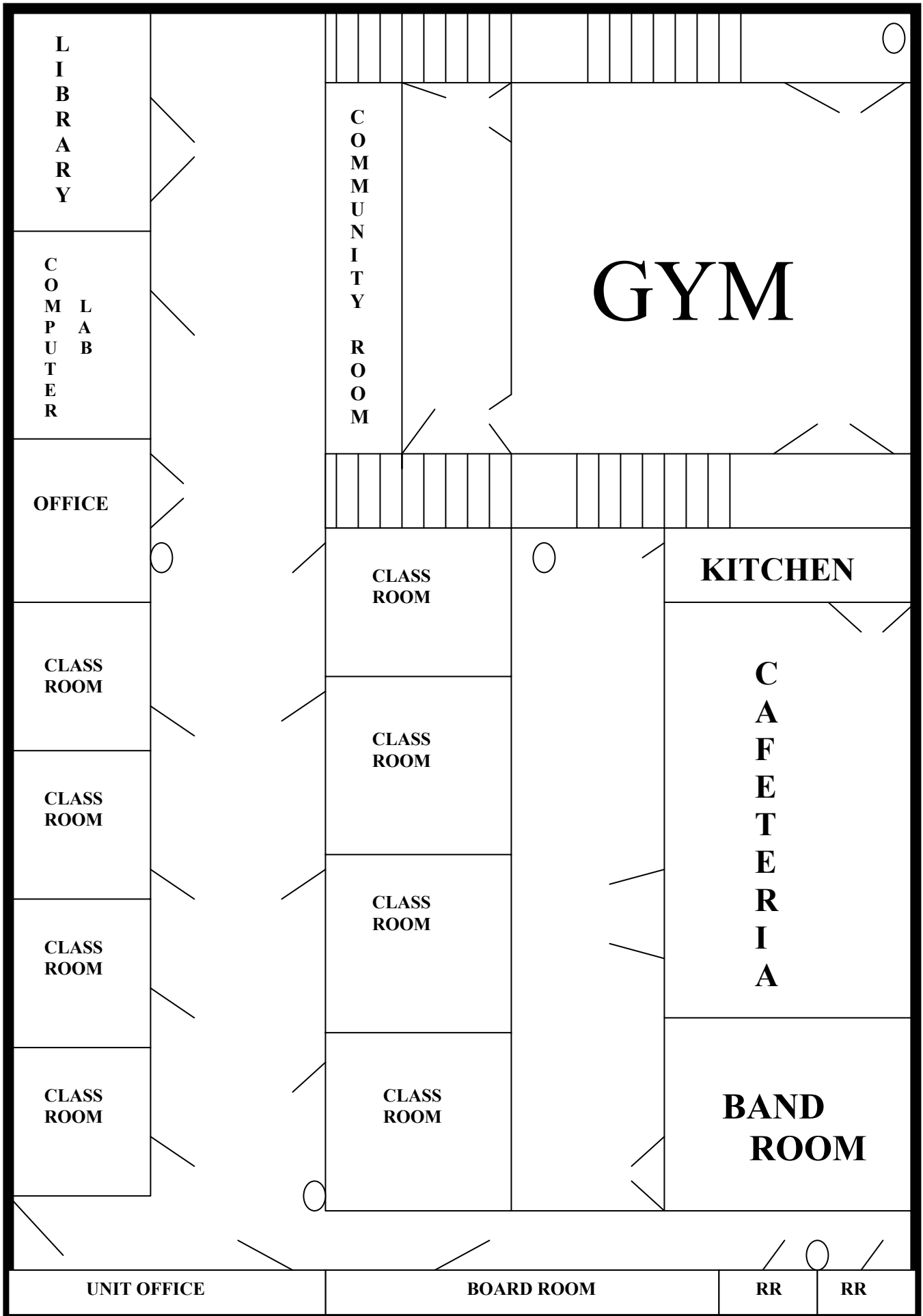
(Teachers: Read aloud directions to the students only once. Pause after each direction long enough for students to mark their maps.)

The directions will be read only once. They will not be repeated. North is to the top of the paper and South is to the bottom of your paper. You will need to turn the paper in order to keep moving forward and follow the directions correctly. Symbols for the water fountains and doors are shown at the top of your map. As you follow the directions, mark your path with the *direction numbers* as they are given. Be sure to listen carefully to each direction.

1. Enter the southwest door
2. Walk east
3. Turn left at the first hallway going north and south.
4. Continue north through the hallway past four classrooms on the east side of the hallway.
5. Stop at the double doors near the water fountain.
6. Turn right toward the stairs.
7. Walk up two flights of stairs.
8. Enter the double gym doors on your left.
9. After entering the gym, turn left and proceed west toward the double doors located on the southwest corner of the gym.
10. Exit through the southwest gym doors into the hallway.
11. Walk straight west across the hall and into the Community Room's southeast door.
12. Turn right in the Community Room and continue north until you come to the door on the northeast end of the room. The door will be on your right.
13. Exit this door and walk straight east across the hall and through the double doors on the northwest corner of the gym.
14. Continue east across the gym to the next set of double doors on the north corner of the gym. The doors will be on your left.
15. Turn left and exit the north gym doors.
16. Turn left and walk down the stairs to bottom hallway.
17. Turn left and enter the first door on your right.
18. Enter this room, turn back towards the door, exit the room and turn right in the hallway.
19. Continue south in hallway and enter the next door on your right.
20. Enter this room, turn back towards the door, exit the room and turn right in the hallway.
21. Continue south in hallway and enter the next door on your right.
22. Where are you?

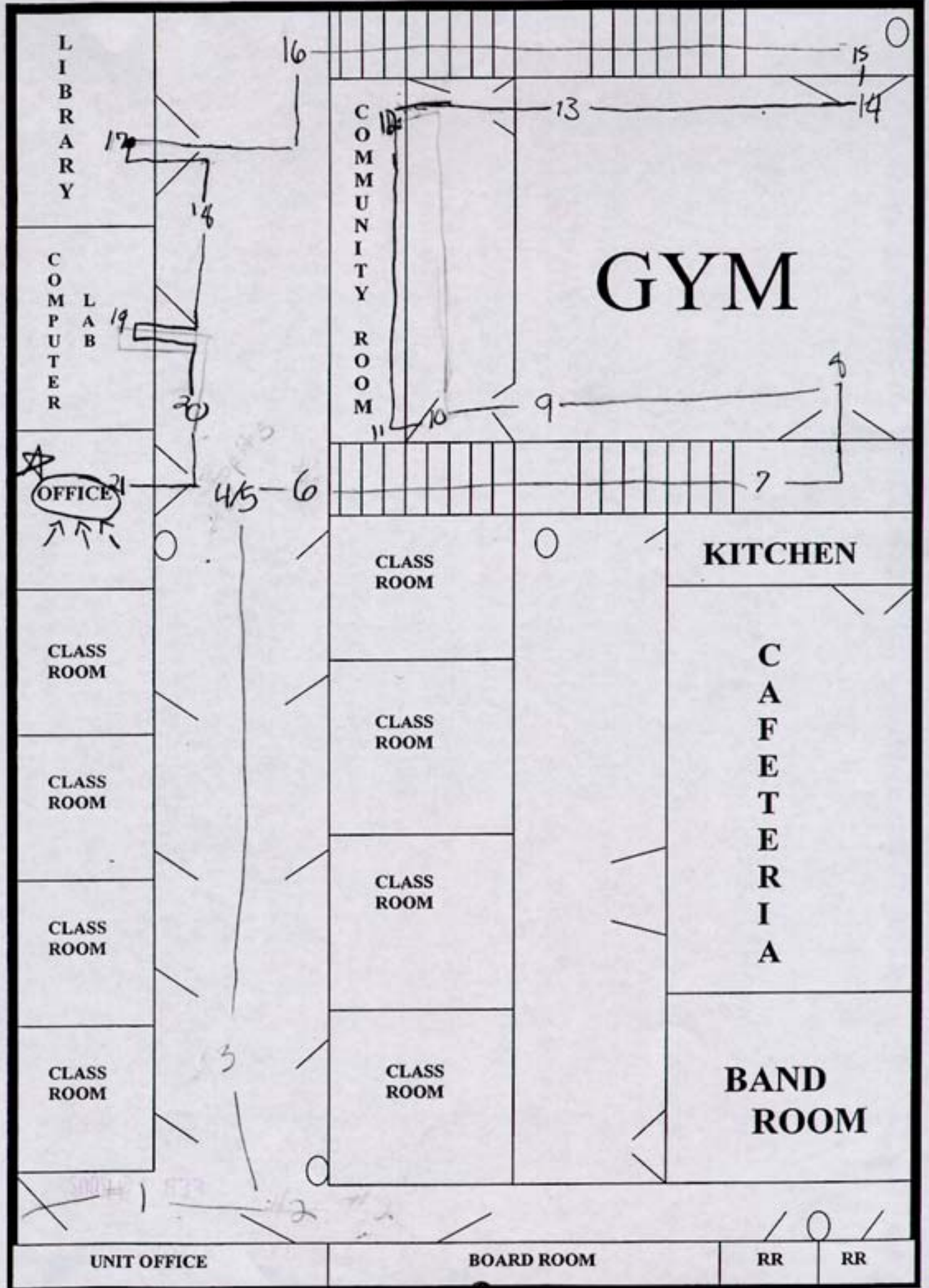
WATER FOUNTAIN ○
DOOR /

N



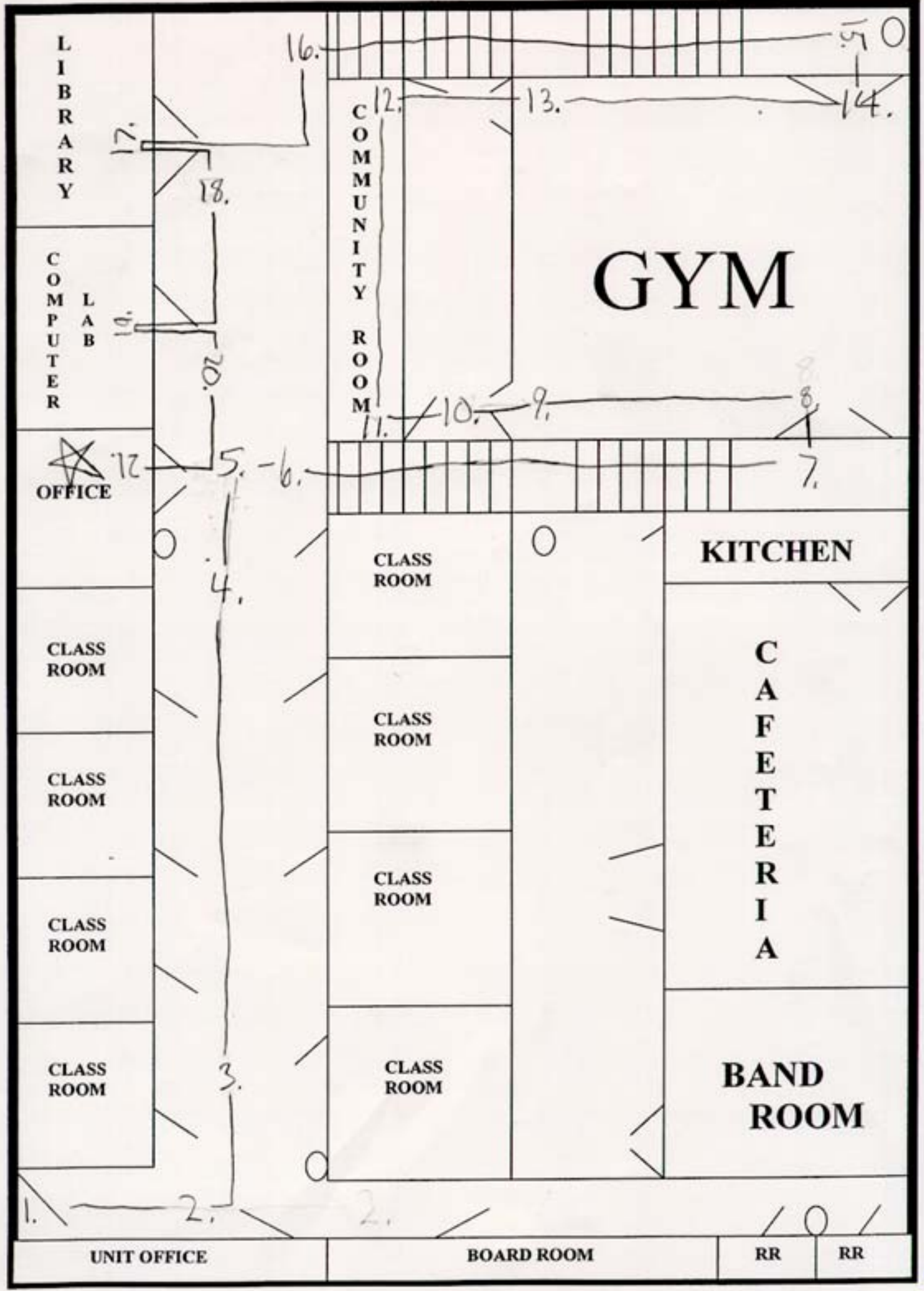
WATER FOUNTAIN ○ "Meets"
DOOR /

N



WATER FOUNTAIN ○ "Exceeds"
DOOR /

N



4A.6.