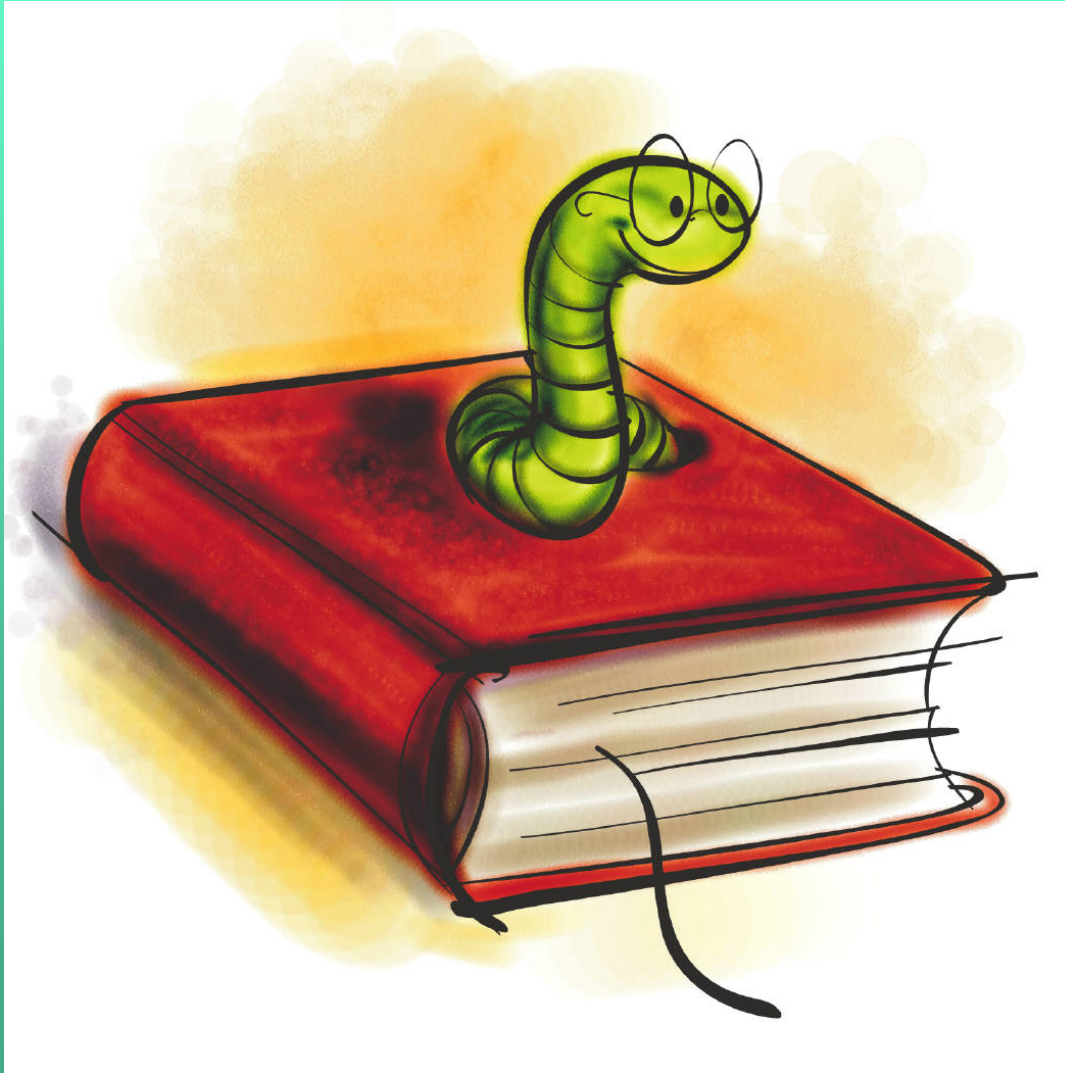


ISAT READING

2009-2010





TEST SESSIONS

Session 1

- * 6 Short Passages (Literary, Informational, Poems)
- * 30 Multiple Choice Questions
- * SAT 10 (Norm-referenced Questions)

TEST SESSIONS

**Session 2 & 3 will
have this format:**

**Each session has 2
passages of more equal
length** [a few passages in the passage
bank are paired passages (i.e., 2009
grade 3 sample book, “The Chickenpox
Party”)];

**10 multiple choice questions
each; 1 extended response**

**One of these sessions will be a
pilot.**



FRAMEWORKS

- Session 2 & 3



Test questions are written by Illinois teachers to align to Framework Objectives.

Framework Issues

Students Across the State seem to have difficulty with items that address these topics

- Homonyms
- Fable/folk tale/legend/myth/fairy tale/essay
- Organizational patterns
- Mood and tone
- Point of view
- Irony
- Genre



More Frameworks Issues



main idea vs. supporting detail

inference

elements of fiction

author's message

type of writing

Character foil

cause/effect

Identifying genre of a passage

– especially between
narrative and expository
when the expository text
contains some dialogue and
events occur in time order



More Frameworks Issues



- On items that require students to look back to a specific paragraph – they don't, or many of them don't.
- Point of View – students only know 1st person (grades 5-8)
- Text structure/organizational pattern
- The meaning of antonym

More Information on the ISAT Reading Assessment

- The Web link below has more information on the reading assessment. There are several points of discussion related to the reading extended-response item.
- http://www.isbe.net/assessment/pdfs/2008/ISAT_Reading_QA.pdf

CONTACT INFORMATION

Jim Palmer

jpalm@isbe.net

217/782-4823

